

bastian.kaiser
portfolio
bachelor of arts in architecture

off

Parkieren auf eigenes
Amerikanische Rotische
Wäusel
Für Schäden an den Fa
lehrt die Gebäudereise
jede Haftung ab

UNITY LOW

CURRICULUM

VITAE

2_3

v i t a

3_

s k i l l s

P R O J E C T S

4_7

B A t h e s i s
[mobile.transport.museum pavillon³]
@ ,nonlocated'

8_11

t r i L O C A (L)
[research and conference center]
@ moratuwa sriLanca

12_15

s h o r t . s t u d y
[roof organization cubedHIGH]
@ dresden germany

16_19

s h o r t . s t u d y
[p a r a s i t i c . s t r u c t u r e s]
@ london uk

20_23

s h o r t . s t u d y
[architecture faculty]
@ kanazawa japan

TRIPS | IMPRESSIONS

24_27

m o d e l s | s k e t c h e s
[a s s o r t m e n t]

28_31

e u r o p e | a s i a
[switzerland | uk | france | germany | sweden
spain | italy | netherlands | belgium ...
sri-lanka | japan]

Address bastian kaiser
 steinfurter str. 144
 48149 muenster

Telephone +49 [0] 251 1 432 440
 Mobile +49 [0] 171 36 777 93

Home www.bastiankaiser.de
 Email mail@bastiankaiser.de
 Skype b.kaiser79

* o4.o8.1979
 [hamm | germany]

CURRICULUM VITAE

1986 _1990 primary school
 [Grundschule | welper]

1990 _1996 high-school
 [Christian-Rohlf's-Realschule | soest]

1996 _1998 commercial college
 [Hubertus-Schwartz-Berufskolleg | soest]

1998 _2001 to train as management assistant in wholesale and foreign trade
 [BEILKE | BLUMENBECKER Industriebedarf GmbH | Soest]

2001 _2002 work as management assistant in wholesale and foreign trade
 [BEILKE | BLUMENBECKER Industriebedarf GmbH | soest]

2002 _2003 civilian service
 [Johanniter-Unfall-Hilfe | soest]

2003 internship
 [Rinsche building company | wer!]

2003 internship
 [rapa-haus builder company | welper]

studies

2003 _2006 study of architecture in the Bachelor course
 [m.s.a. | muenster school of architecture]

2006 graduated as Bachelor of Arts in architecture
 [bachelor topic: contemporary mobile transport museum]

2006 _ study of architecture in the Master course
 [m.s.a. | muenster school of architecture]

internship

2007 rheinfluegel baukunst | duesseldorf



complimentary

2003 – member of the student council at the
m.s.a. [muenster]

2005 – member of manöver5e.V. [muenster]

2007 – elected member of the senate at the
university of applied sciences [muenster]

[inter]national affairs

2006 impromptu at etsa barcelona [spain]

2006 impromptu at HfbK dresden [germany]

2006 impromptu at AAschool london [gb]

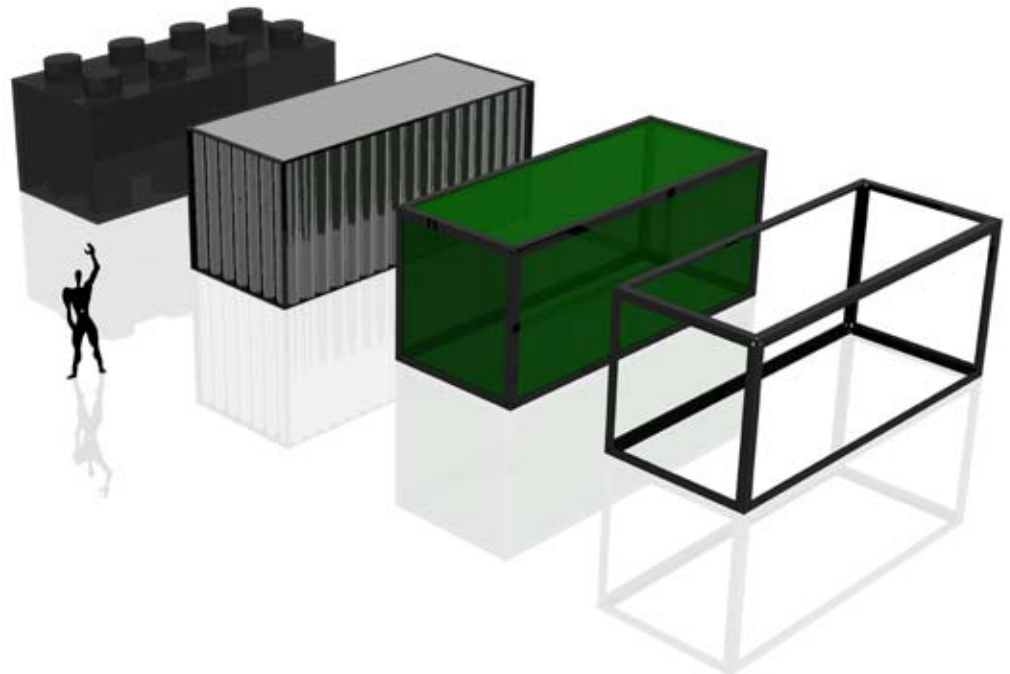
2007 substitutional study at Uo Moratuwa [sri-lanka]
[triloka | supported by daad]

2007 substitutional impromptu at CoA kanazawa [japan]
[supported by daad]

cad	AutoCAD 2006	+++
	VectorWorks 12	+
	Rhino 4.0	+++
visualization	Cinema 4D R10	++
layout	Photoshop CS3	+++
	Illustrator CS3	+++
	Indesign CS3	++
	Acrobat 8 professional	++
office	Word XP	++
	Powerpoint XP	+++
	Excel XP	++
web	Dreamweaver 9	++
languages	english	++
	spanish	+

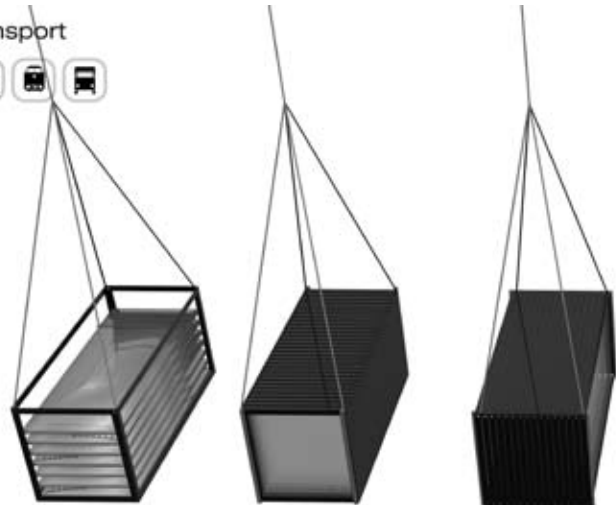
SKILLS

The aim consisted in creating a museum in which is suitable for presenting an exhibition at different places in one and the same context. To realize this economically, I decided to work with modules in the size of traditional, international used containers with the length of 20". At the example of germany, I found out, that it is due to causes of regulations not possible to transport more than 56 20"-containers inland waterway craft-driven with only one freighter.





transport

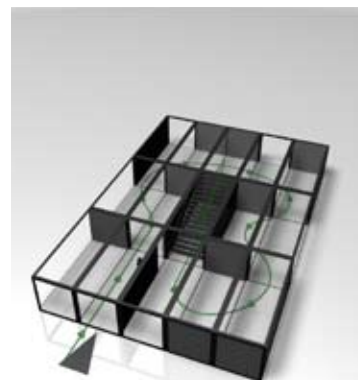
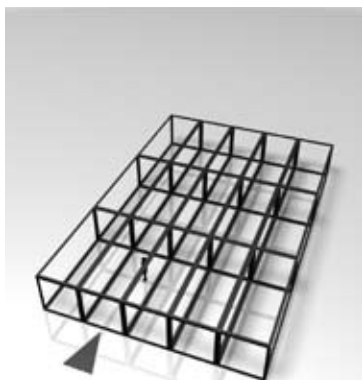
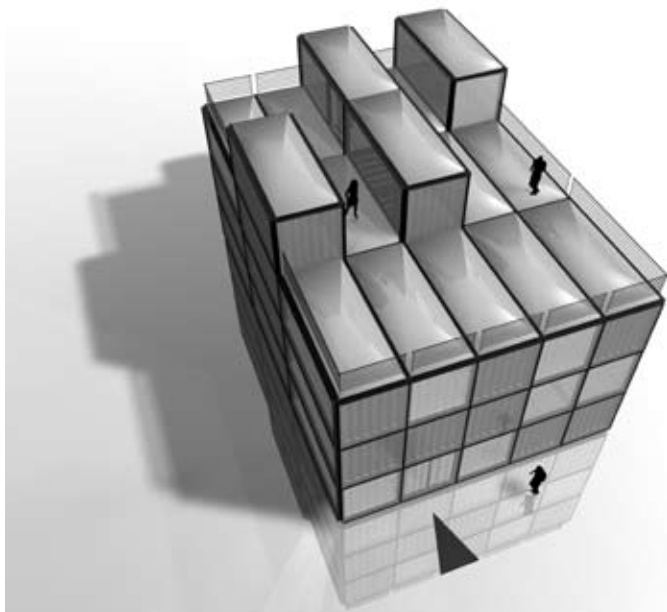


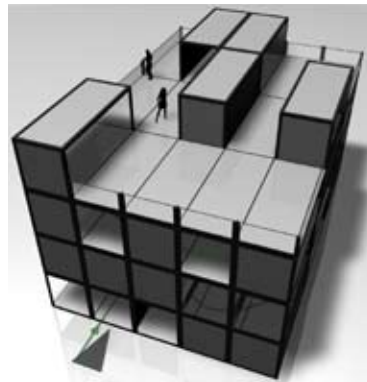
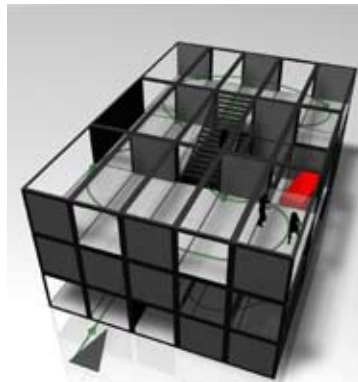
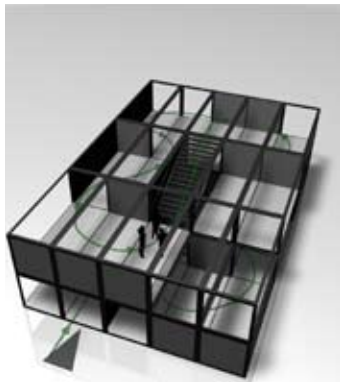
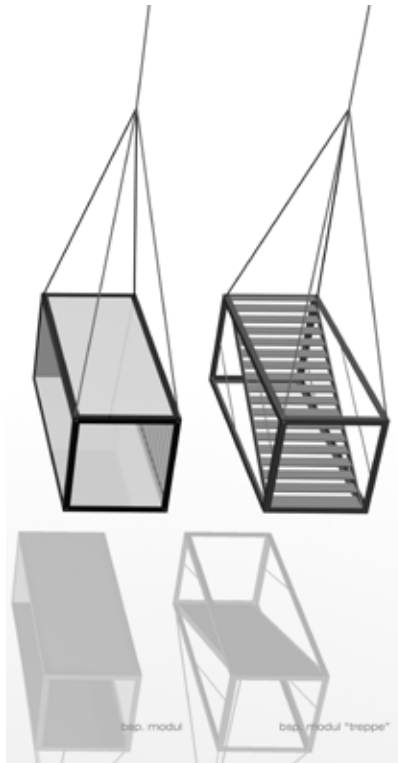
dachelemente in
leerem grundmodell
gestapelt

basiselemente
(abwärts)
an bolzen aufgesetzt

basiselemente
(aufwärts)
an bolzen aufgesetzt

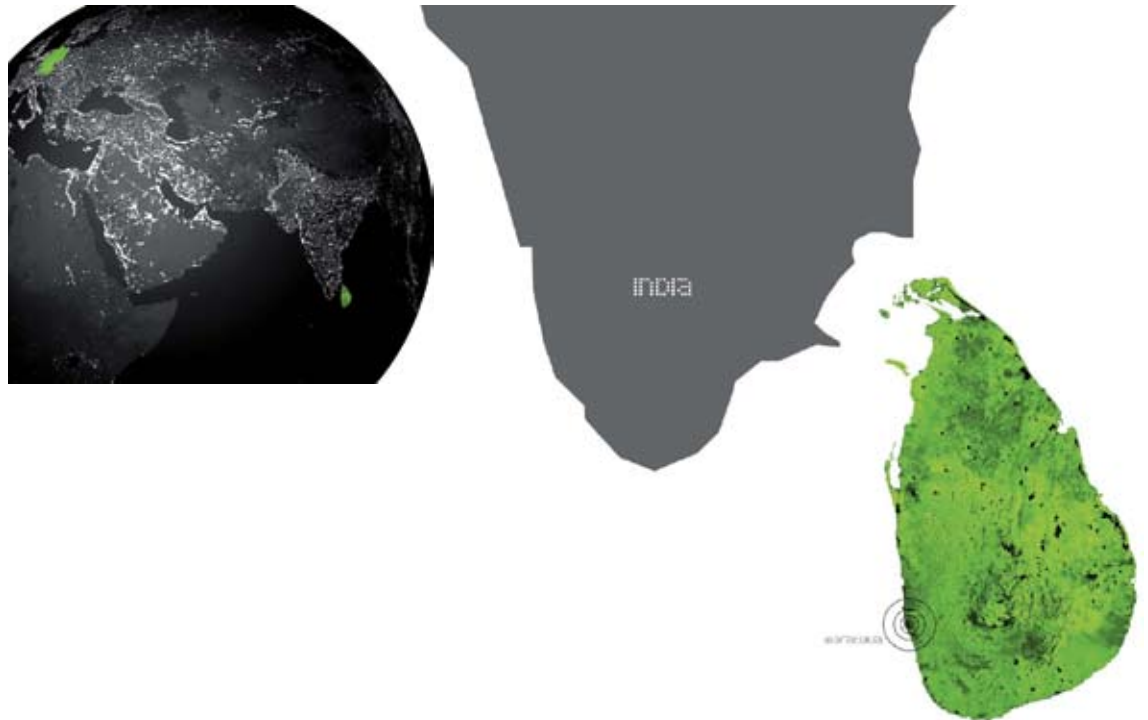
montage





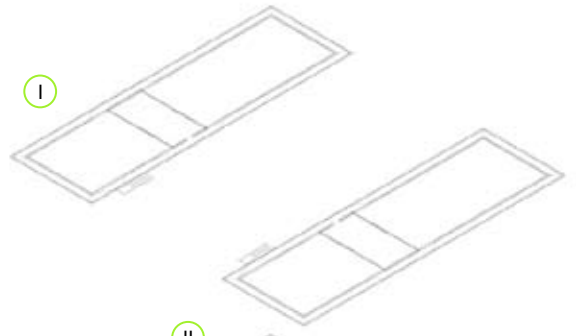
t r i L O C A L [L]
[research and conference center]
@ m o r a t u w a | s r i L a n c a
in collaboration with thomas schulz
M A _ 2 0 0 7 | P r o f . A . M a n d r e k a r [U . o . M o r a t u w a]
+ P r o f . D i p l . - I n g . J . R e i c h h a r d t [M . S . A .]

After one week of participating at a symposium with the topic 'green building' at the university of moratuwa, we started a workshop with the aim of creating a new research- and conference center at the campus of the UOM. The construction of the building had to take the green-building-aspects into consideration. In our point of view the outstanding quality of the given site is the wild jungle, because on the whole existing campus everything is aligned. As a result of fact, that the function of an research and conference center is not directly bound to the student-live, we created the idea of to offering a public space for the students as well. Our aim was to set the jungle in contrast to our building by framing the view.

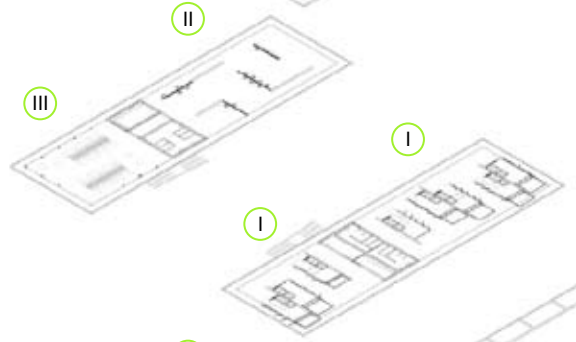




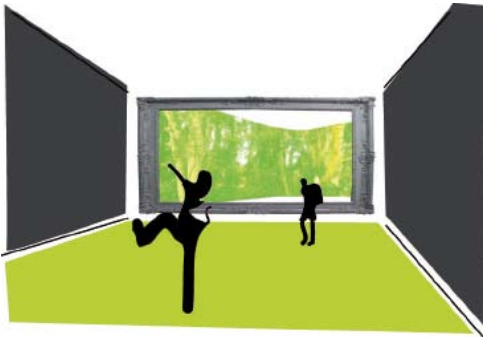
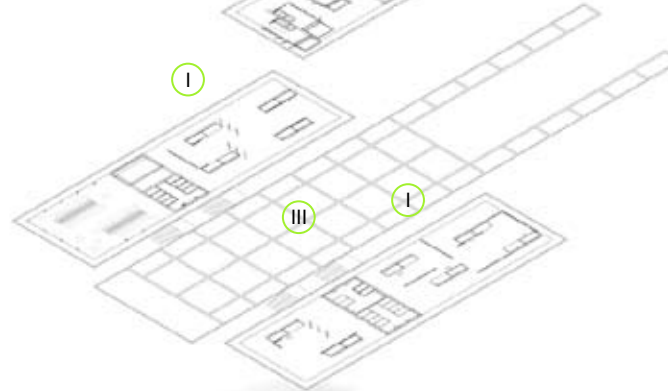
Roof
I_ public space



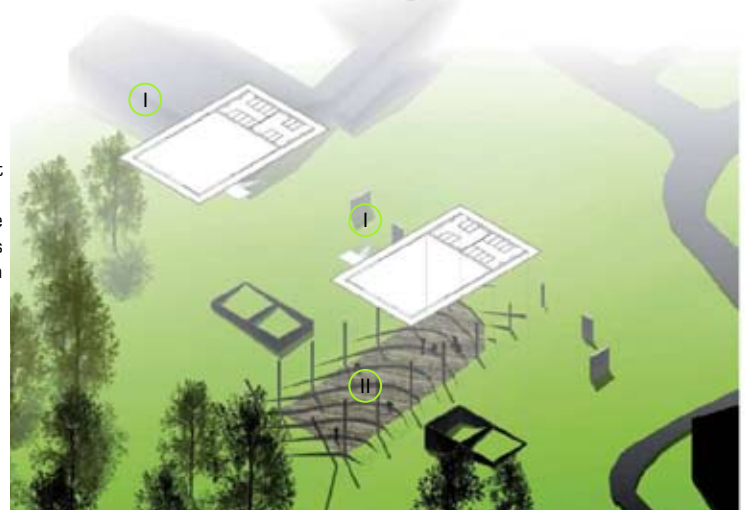
1st floor
I_ residential housing
II_ meeting area
III_ restaurant

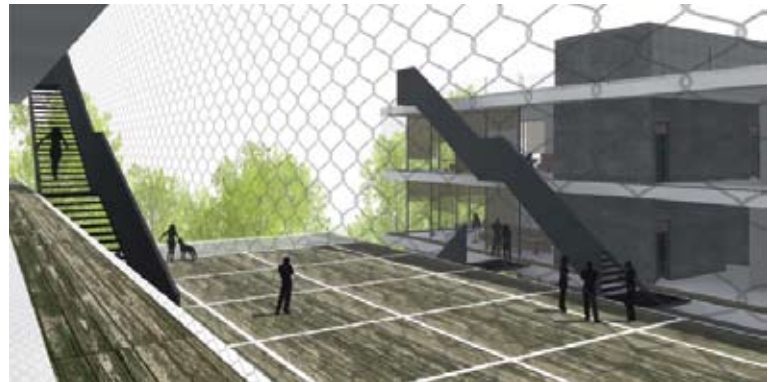
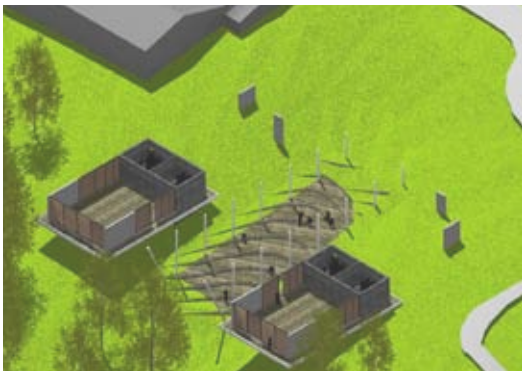


Ground floor
I_ research
II_ restaurant
III_ public space



Basement
I_ lecture rooms
II_ auditorium

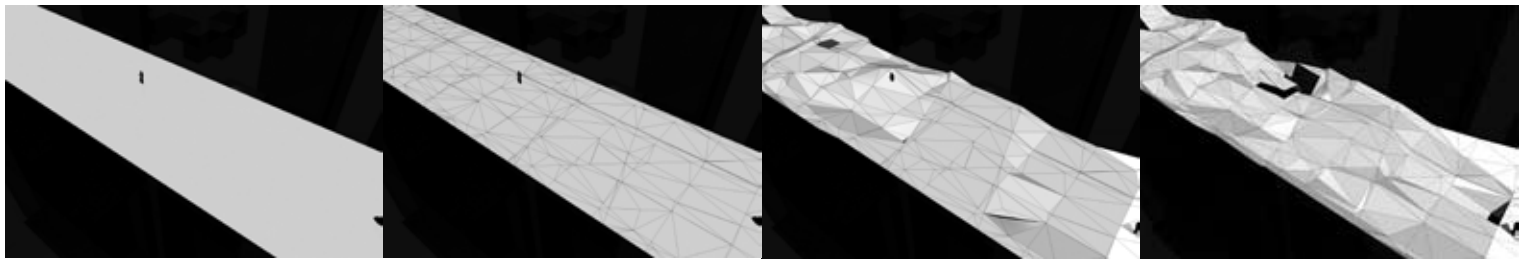




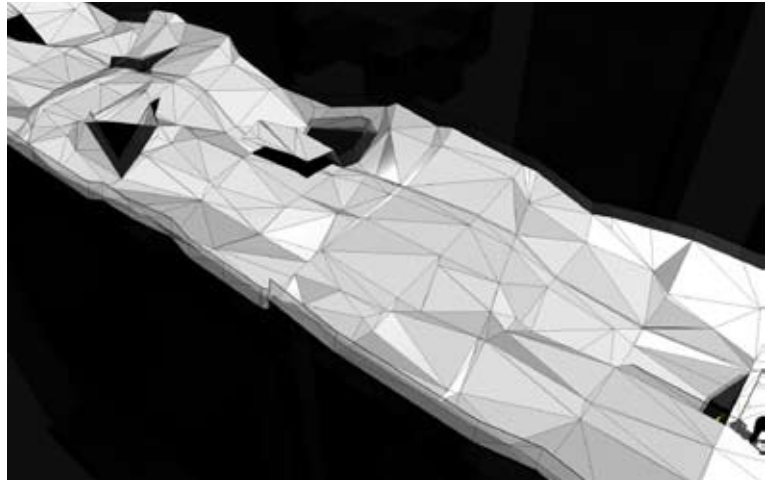
s h o r t . s t u d y
[rooforganization cubedHIGH]
@ D r e s d e n | G e r m a n y
in collaboration with tina pawlowski
MA_2006 | Prof. Dipl.Ing. O.Laustroer (HfbK_Dresden)

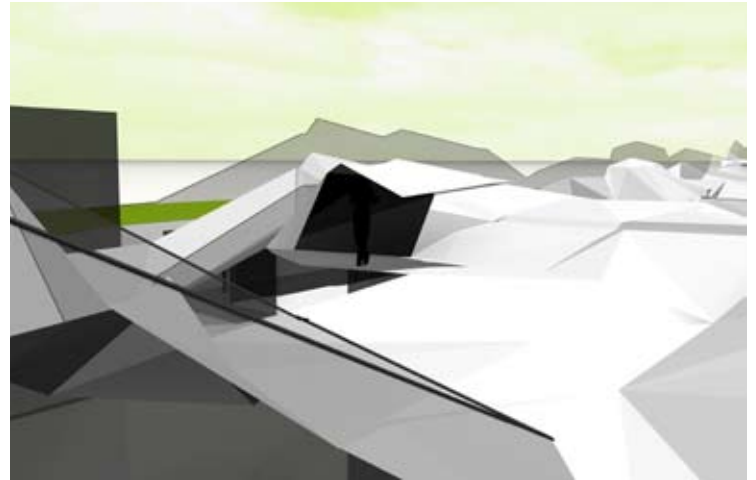
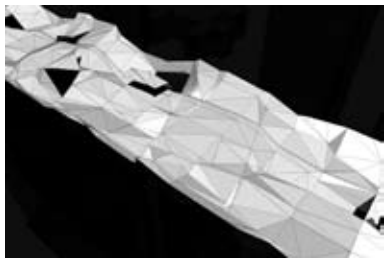
The aim contains to deal with existing studies about surfaces like the ones of claude parrent.
During the workshop in dresden we worked experimentally with surfaces and
visited several ‚Plattenbauten‘. In this case we decided to deformate a given surface on top of the
‚plattenbau‘ by defining several parameters like connected views and the topic of creating
spaces of interactivity and communication as well as spaces of silence and introvert spaces.

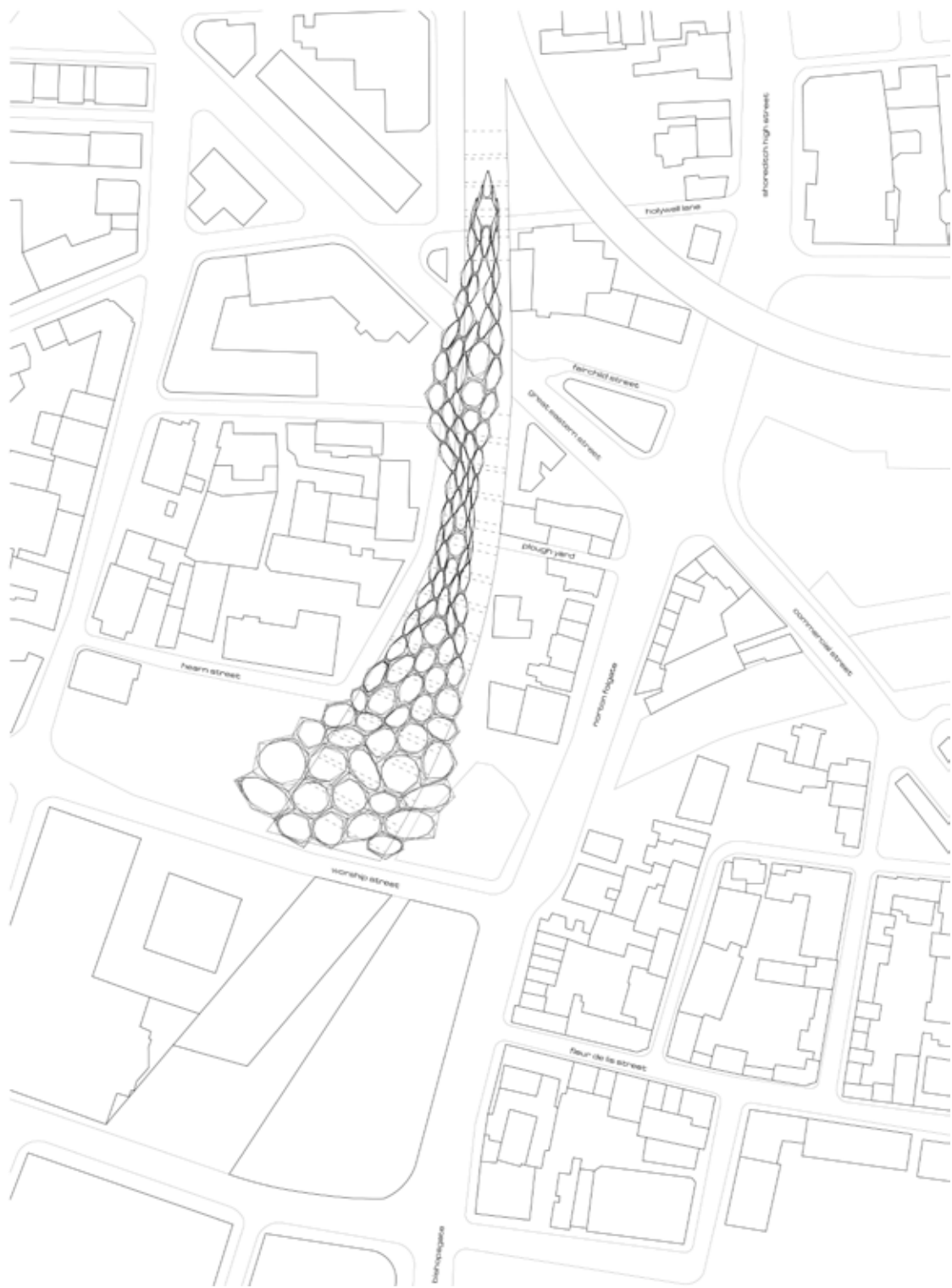




In step one the planar surface is positioned above the stair towers. In the second step the axes, which were defined before, lay down on the surface and cut it into many pieces. Now the edges of the triangular surfaces were new defined in their height - respecting the affecting axes. In this way the strong grid of the 'Plattenbau' gets terminated by the parameters (view relationships) - which were specified before.



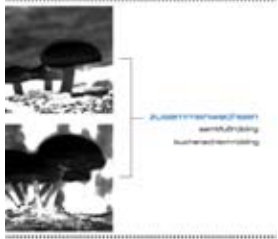
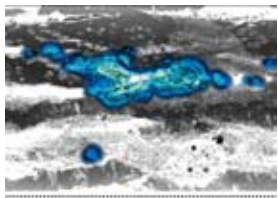




s h o r t . s t r u c t u r e s
[p a r a s i t i c . s t r u c t u r e s]
@ L o n d o n | U K
in collaboration with thomas.schulz + carsten.mennenga + jürgen.wittner
MA_2006 | Holger Kehne BSc (Hons) Dip Arch (AASchool_London)

Another short-study led us to London in November 2006. First we scanned the city for finding a place where parasitic structures are imaginable. In Shoreditch we found an old railroad bed which has obviously not been used for years. During the years vegetation reconquered the railroad bed and only the arches below the former track were connected to the surrounding by using them as parking space or stock, for example. The area is located between the bank-quarter and the artist-quarter. We developed a ‚super-structure‘ oriented by mushrooms, because mushrooms in nature are cleaning up the surrounding. We took the inner structure of a specific mushroom (comb-pattern) as well as we defined functions which were urgently needed at this area of London. After that we positioned the functions and the defined comb-grid on the railroad bed. Now the grid gets deformed by several parameter like the needed spaces of the particular functions and the required distances to the surrounding. This project understands itself less than a draft, but rather than a study about ‚super-structures‘ and their variation ability and achievement.





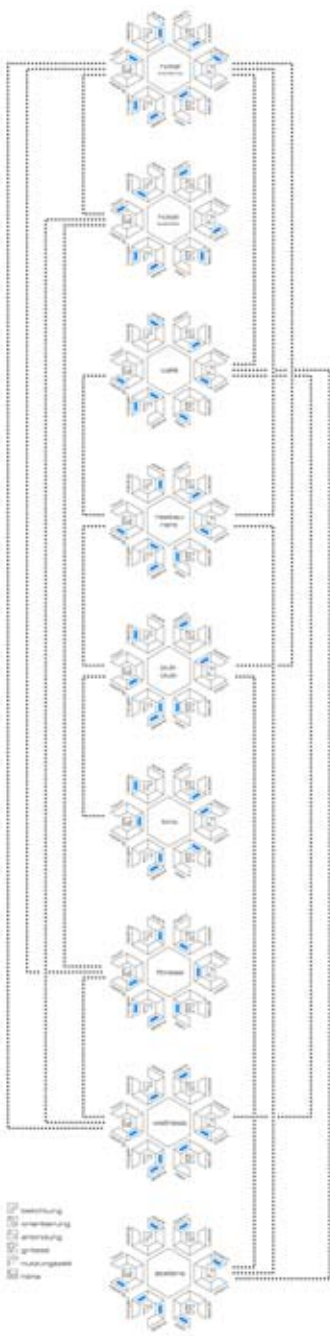
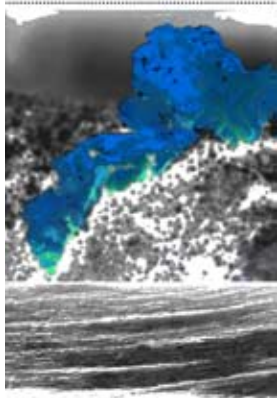
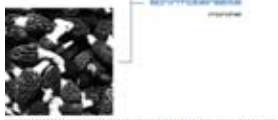
Wurzelschwämme
 sekundäres
 Kautschuknetzwerk



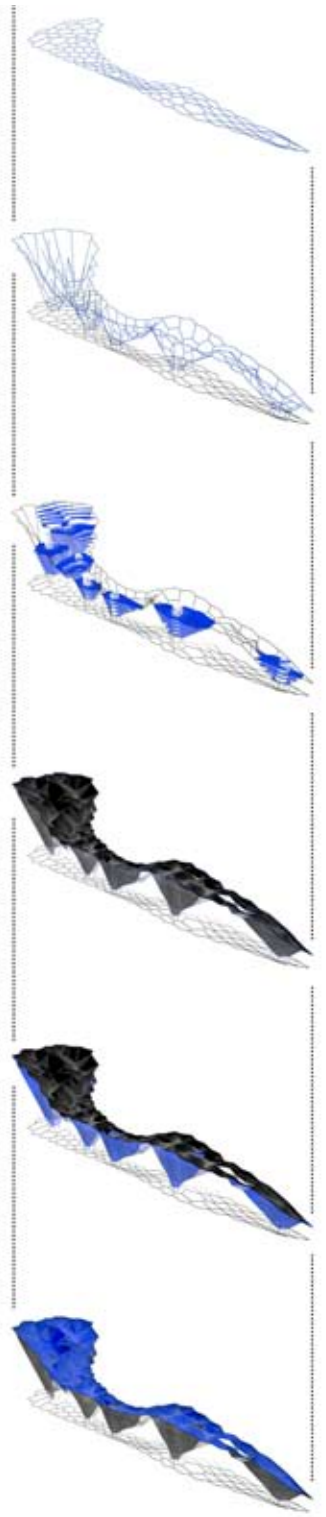
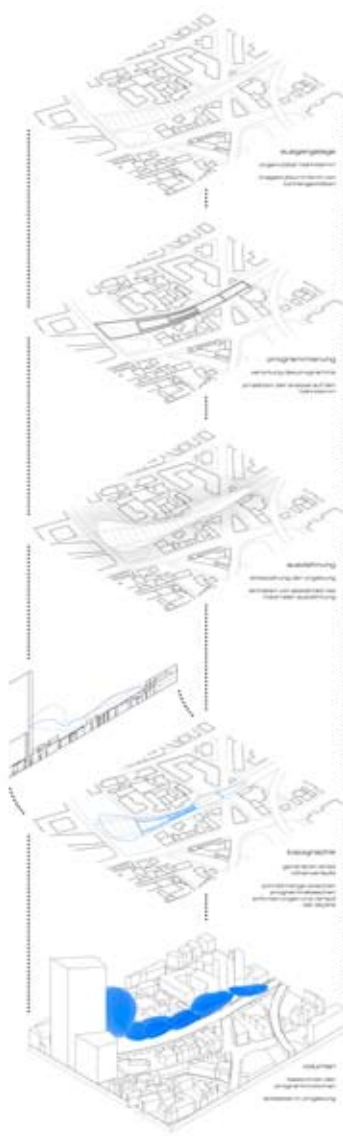
Wurzelschwämme
 Primäres
 sekundäres
 Kautschuknetzwerk

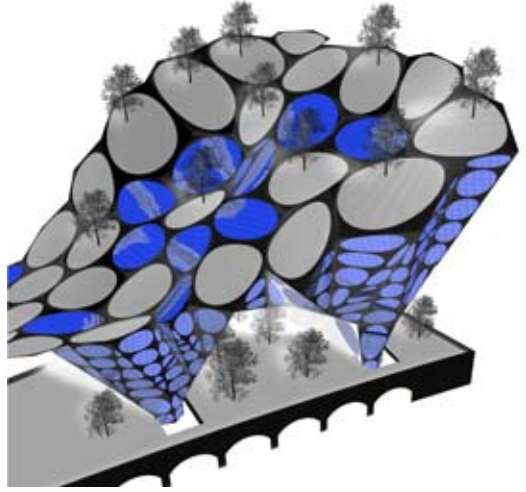
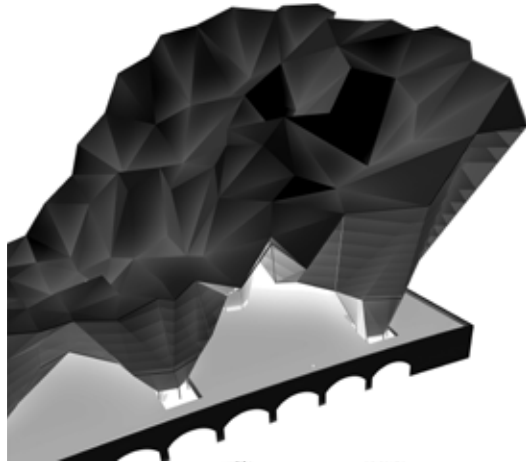
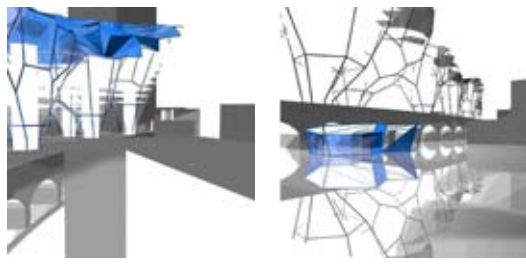
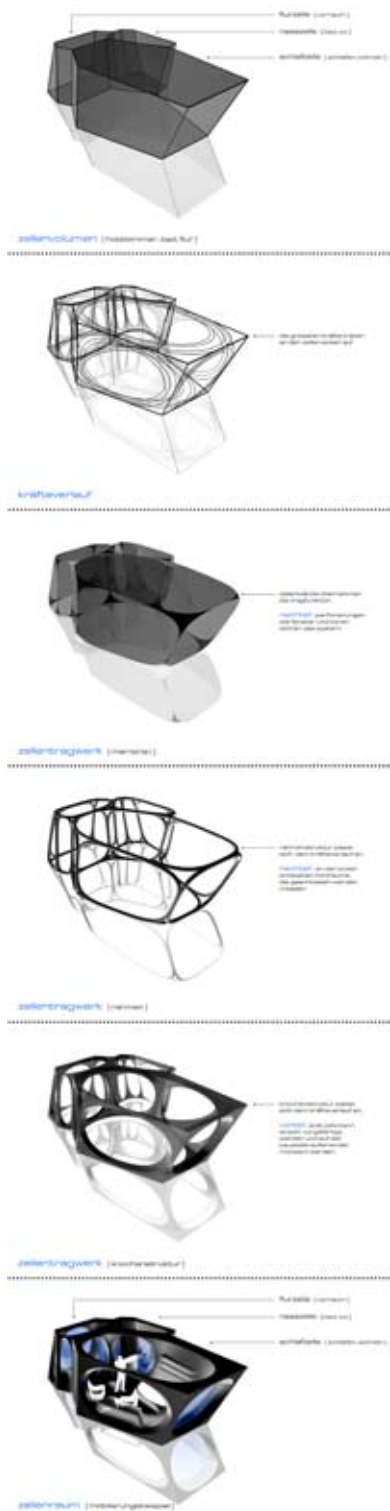
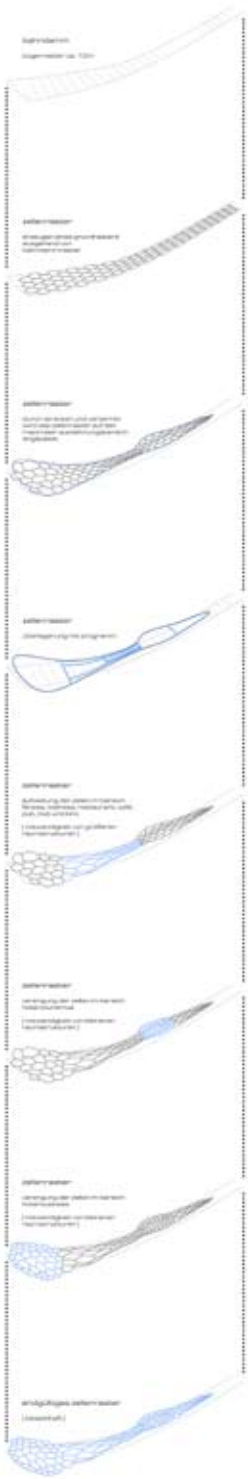


Wurzelschwämme
 Primäres



Primäres
 Sekundäres
 Tertiäres
 Quaternäres
 Primäres



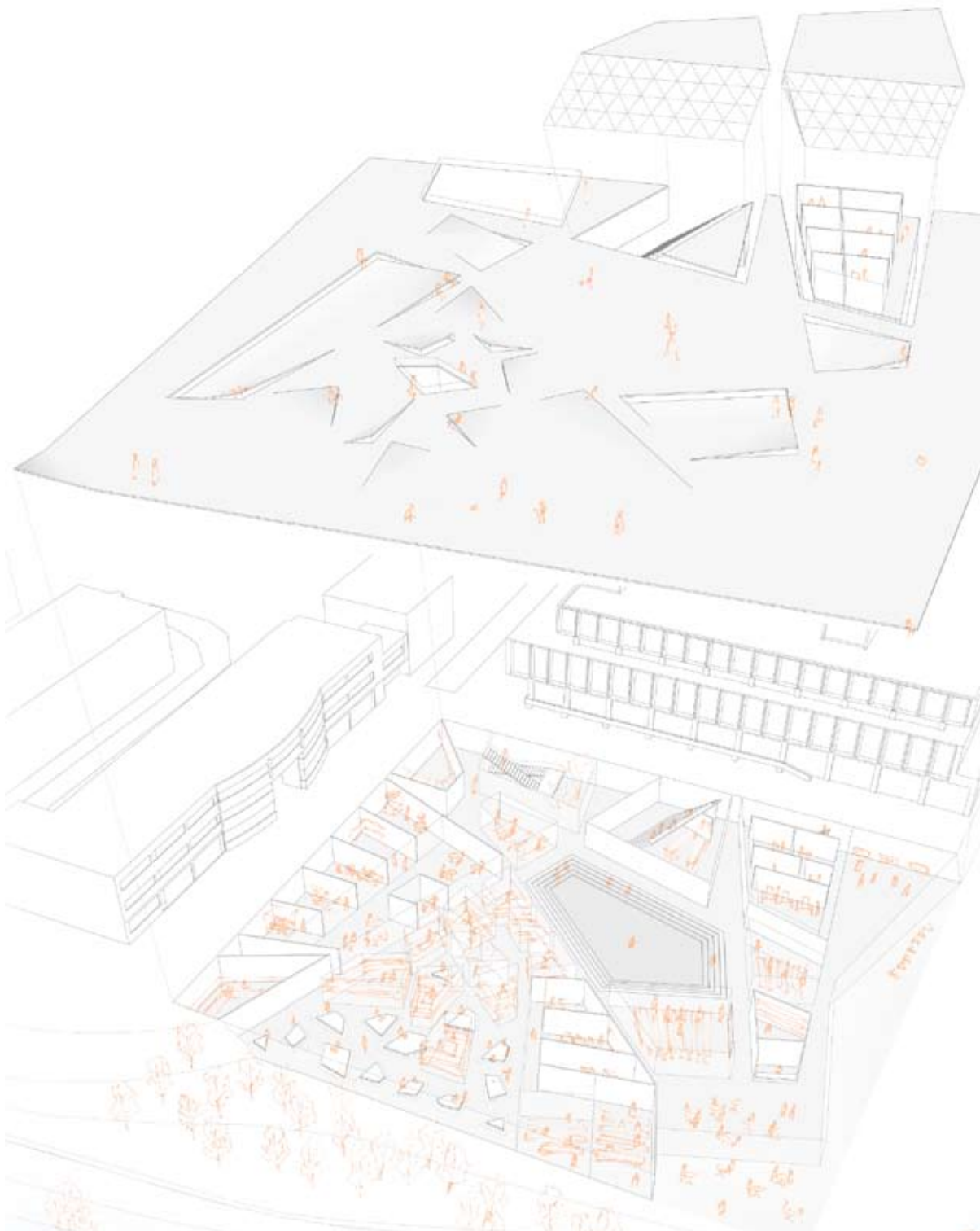
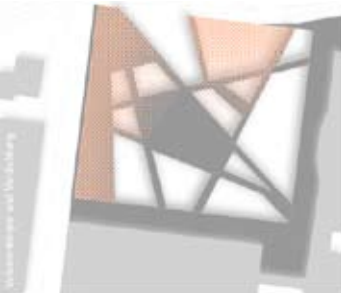
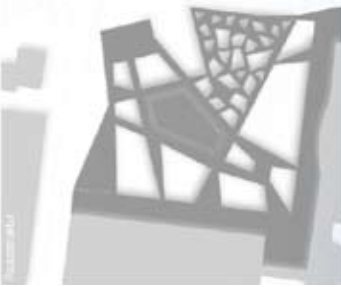


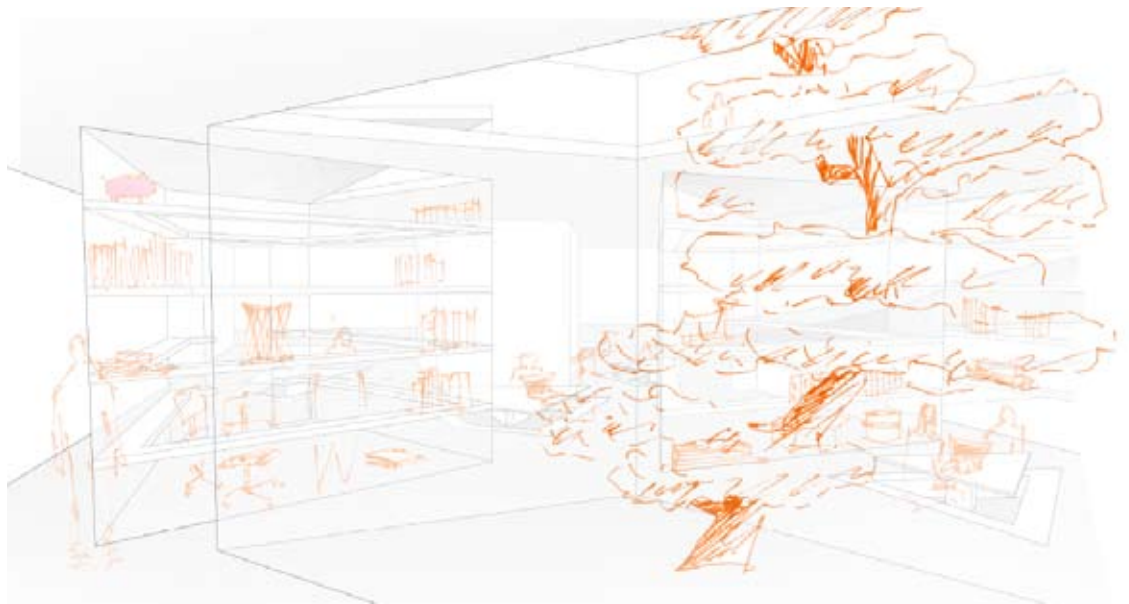
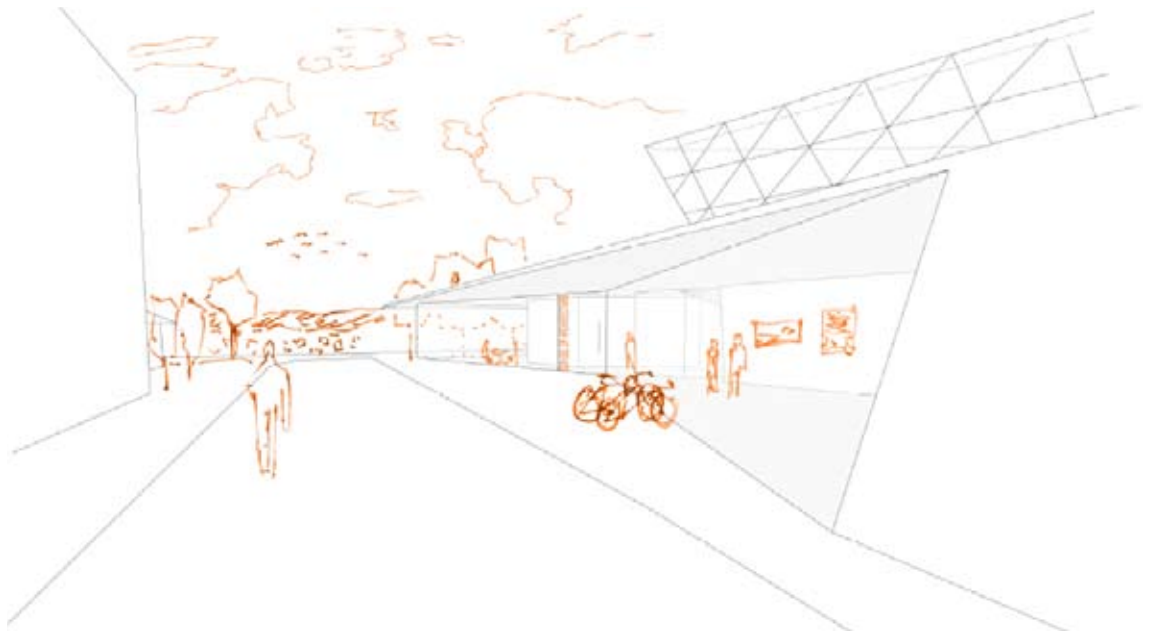


s h o r t . s t u d y
[a r c h i t e c t u r e . f a c u l t y]
@ K a n a z a w a | J a p a n
in collaboration with tobi mauritz
MA_2007 | Prof. H.Sakamoto [C.o.A._Kanazawa] + Dipl.-Ing. B.Severin [M.S.A.]

The task contains dealing with an ‚ideal‘ concept for teaching architecture. After we discussed a lot about existing teaching-concepts and buildings in that architecture is taught, we defined needs. In our opinion every student has to learn the same basics about architecture and everybody has to get the same basic tools in the bachelor-courses as well as the idea of ‚free-your-mind‘. It is also important to know about the ideas , thinking, processes and projects of the following students. In the master-course every student is able and allowed to choose courses and projects by his own wishes to individualice himself considering his abilities and orientation. On the side exists the only opened space on the whole campus. It was our aim to do not take this quality away from the campus. Because of this, we decided to locate the whole program below the ground.

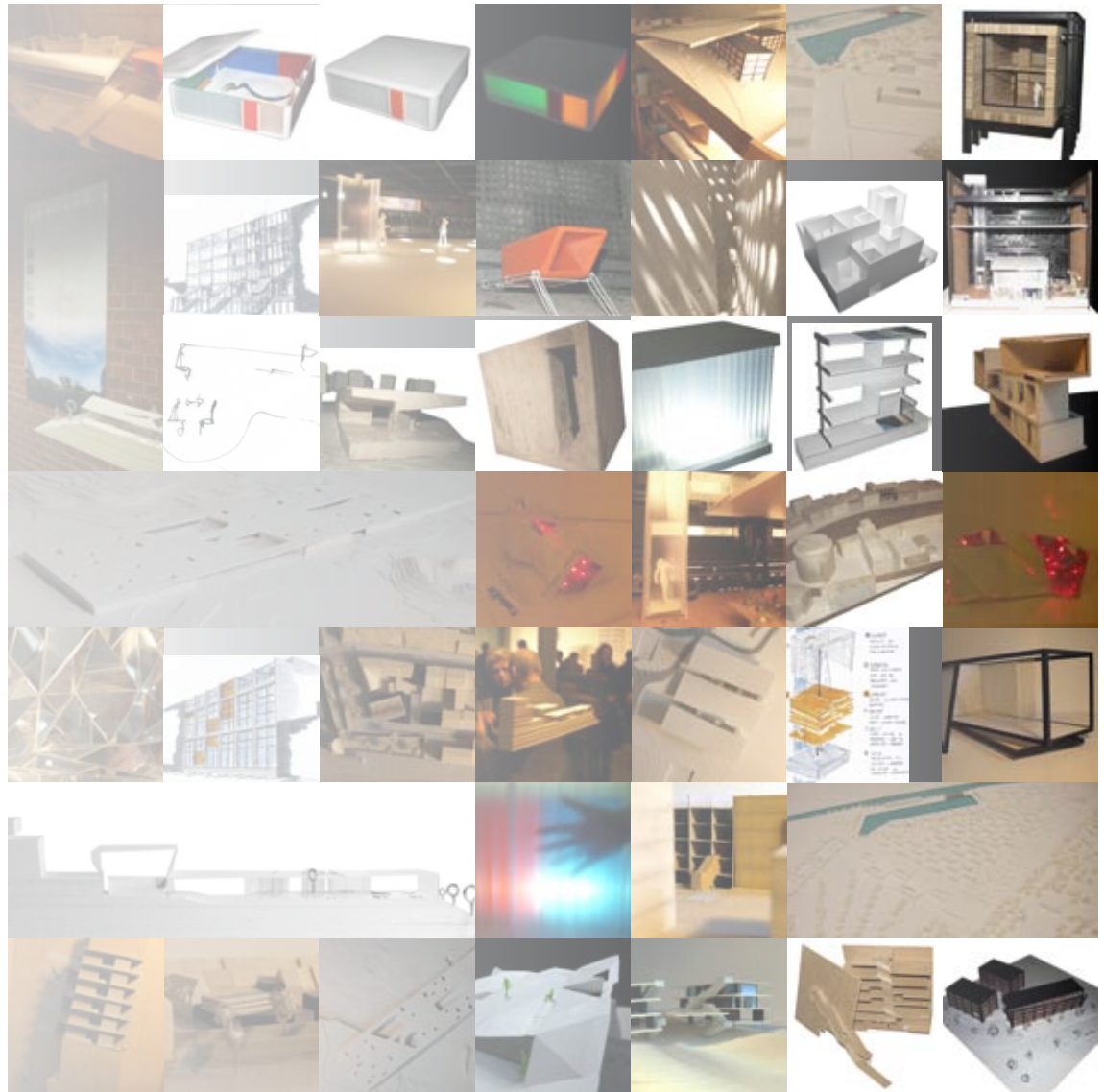


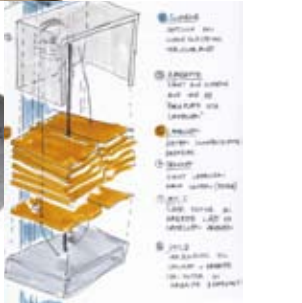
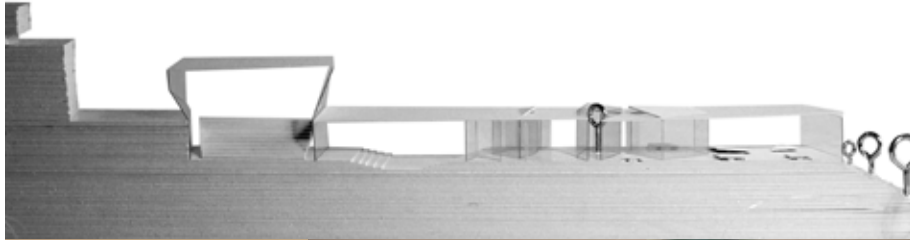
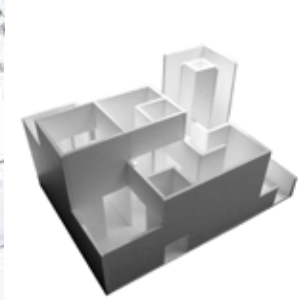
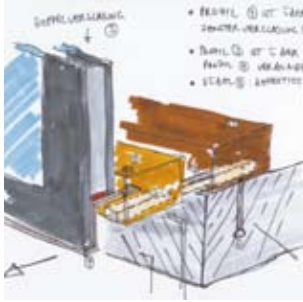
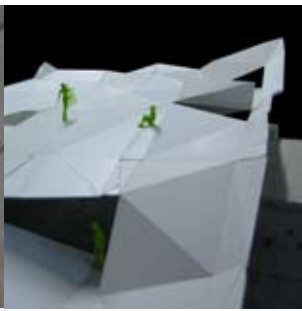


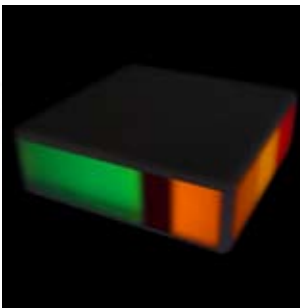


I M P R E S S I O N S

m o d e l s | s k e t c h e s
[a s s o r t m e n t]







TRIPS



IMPRESSIONS

e | u | r | o | p | e
[switzerland | uk | france | germany | sweden
spain | italy | netherlands | belgium | ...]

a | s | i | a
[sriLanka | japan]



